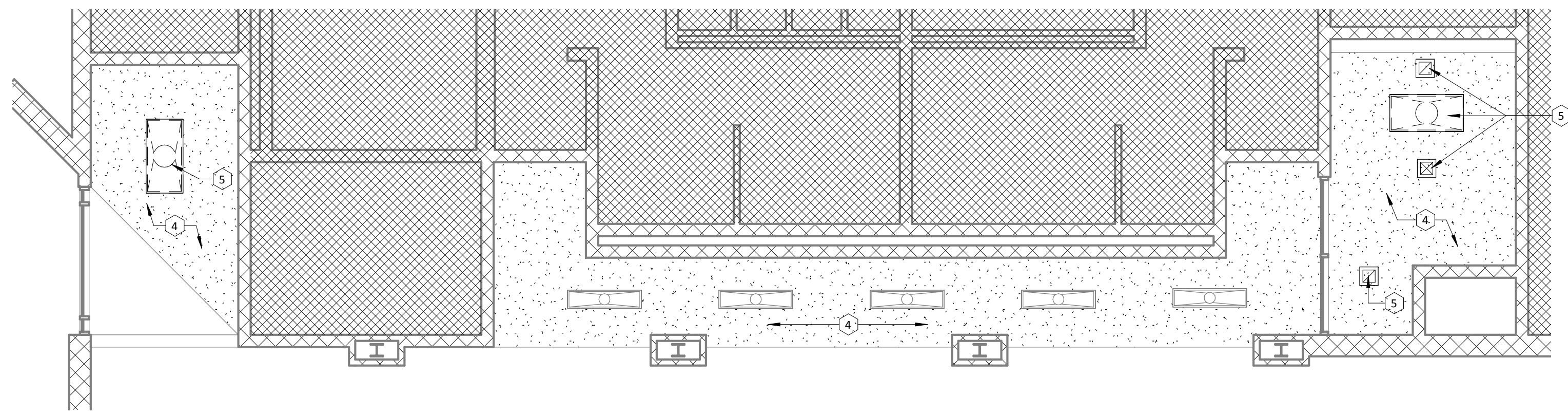


1 DEMOLITION PLAN
SCALE: 1/8" = 1'-0"



2 DEMOLITION RCP
SCALE: 3/16" = 1'-0"

ISSUE	DATE
Issue for Bid	06/13/14

GREGORY H&W POOL REPAIRS

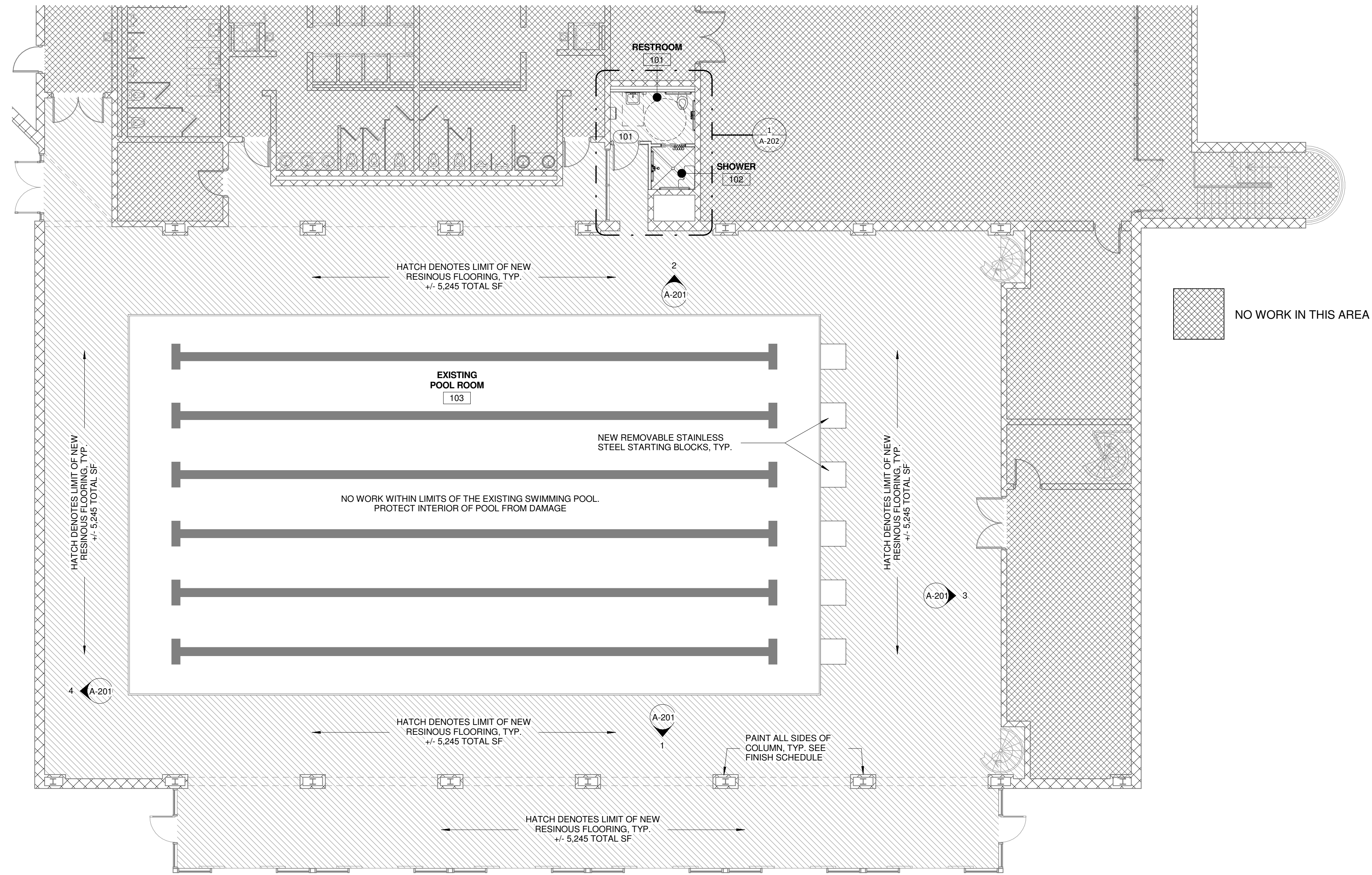
476 Hubbard Dr., Lancaster, SC 29720

GMC # AGRE140014
OSE# H37-9513
Issue for Bid

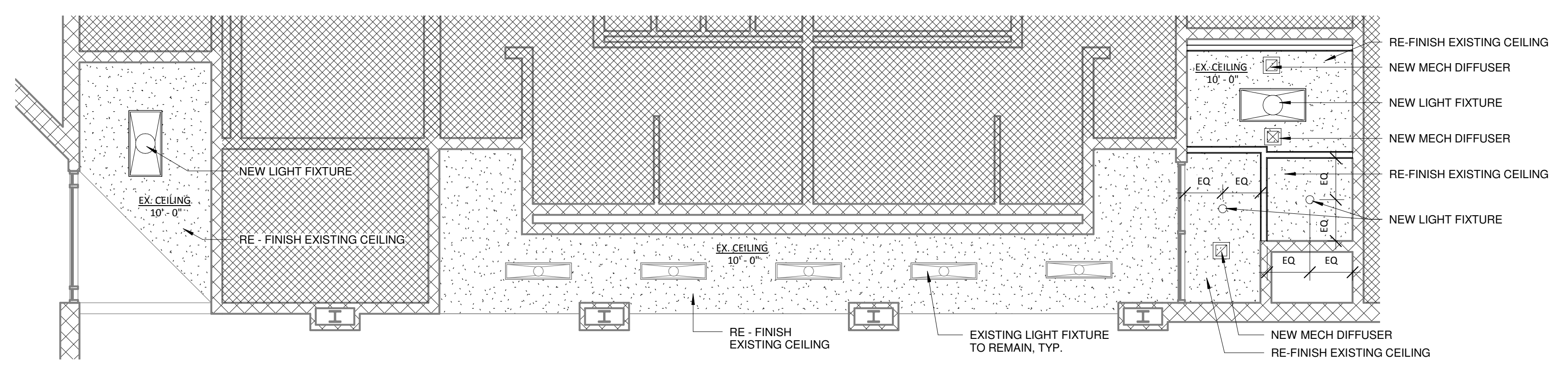
GOODWYN MILLS CAWOOD
101 East Washington Street, Suite 200 | Greenville, SC 29601
Tel 864.527.0460 | GMCNETWORK.COM

DEMOLITION FLOOR
PLAN

A-101
sheet ___ of ___



1 NEW CONSTRUCTION FLOOR PLAN
SCALE: 1/8" = 1'-0"



2 NEW CONSTRUCTION RCP
SCALE: 3/16" = 1'-0"

NO WORK IN THIS AREA

GREGORY H&W POOL REPAIRS

476 Hubbard Dr., Lancaster, SC 29720

GMC # AGRE140014

OSE# H37-9513

Issue for Bid

ISSUE DATE

Issue for Bid	Date
	06/13/14

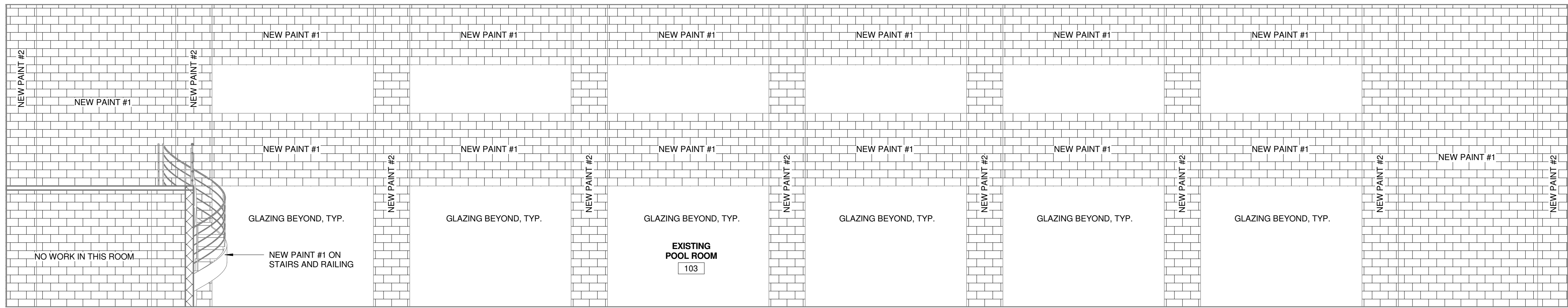
drawn by: IVAS
checked by: IMEK

NEW CONSTRUCTION
FLOOR PLAN

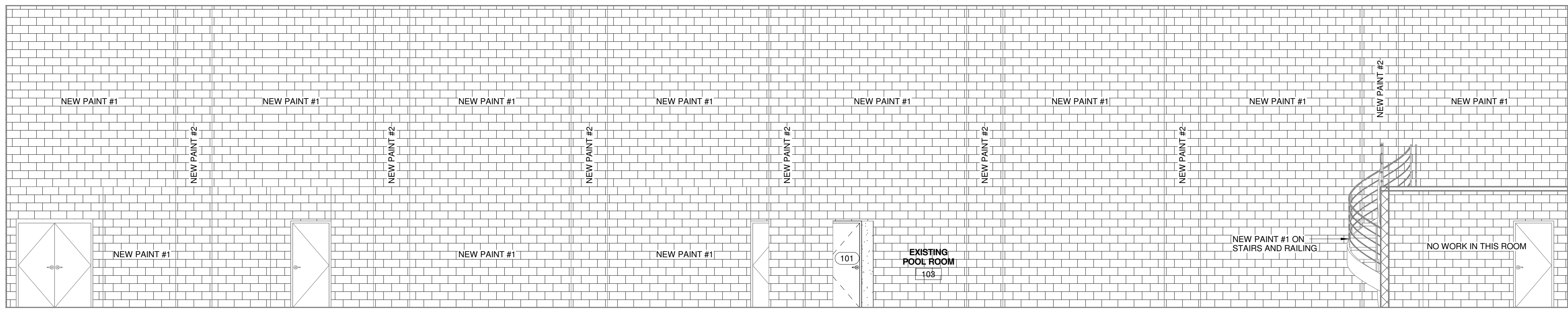
A-102
sheet of

GOODWYN MILLS CAWOOD

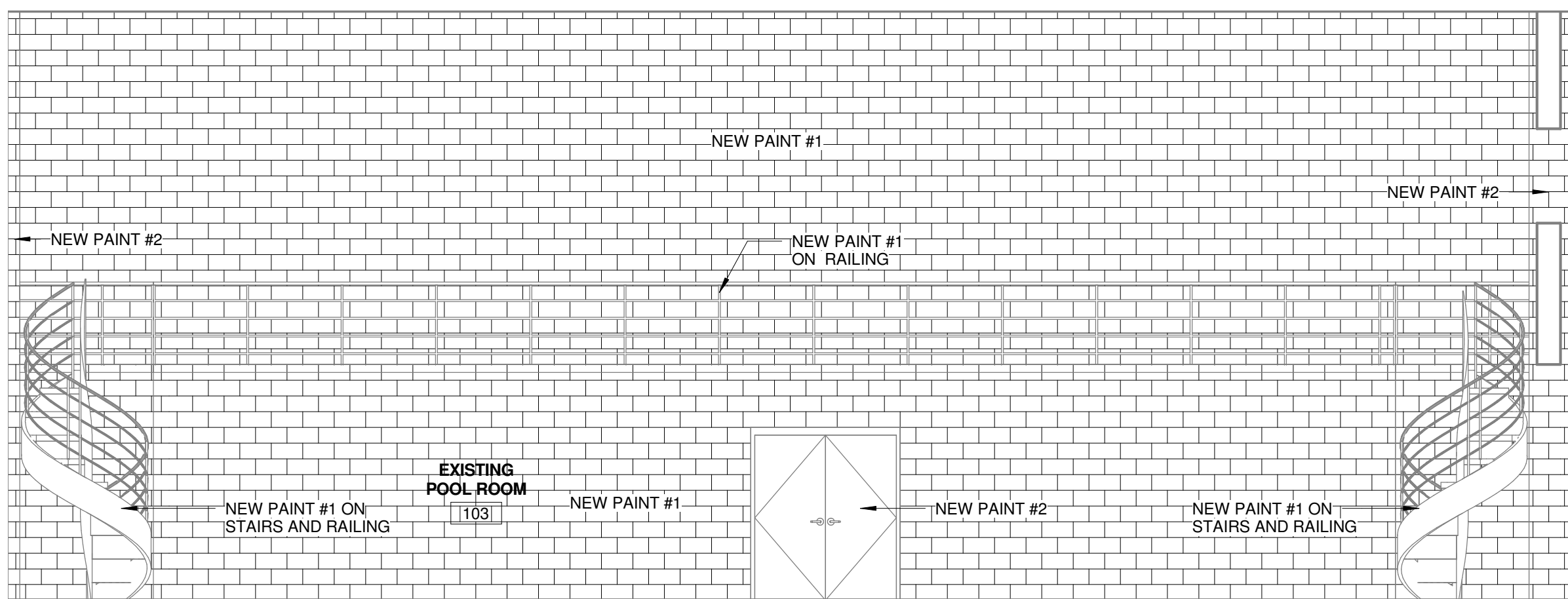
101 East Washington Street, Suite 200 | Greenville, SC 29601
Tel 864.527.0460 | GMCNETWORK.COM



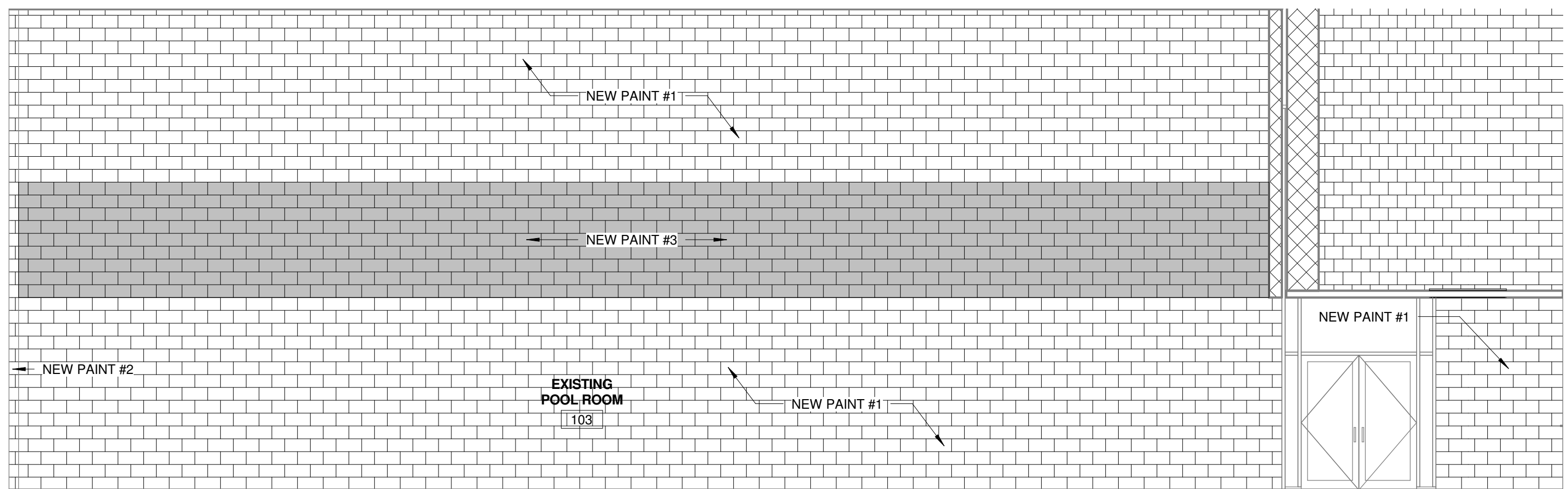
1 INTERIOR ELEVATION
SCALE: 3/16" = 1'-0"



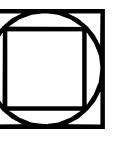
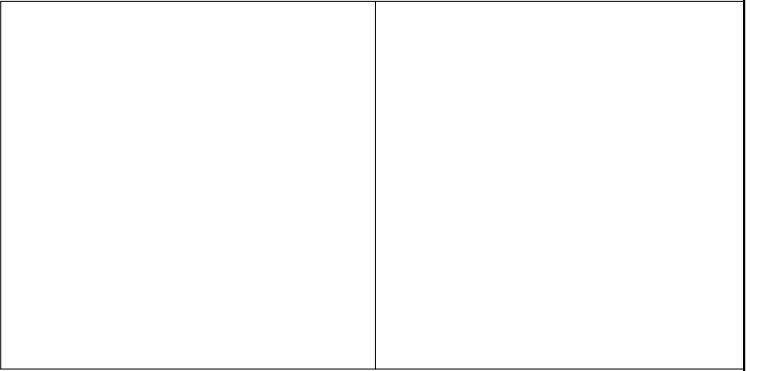
2 INTERIOR ELEVATION
SCALE: 3/16" = 1'-0"



3 INTERIOR ELEVATION
SCALE: 3/16" = 1'-0"



4 INTERIOR ELEVATION
SCALE: 3/16" = 1'-0"

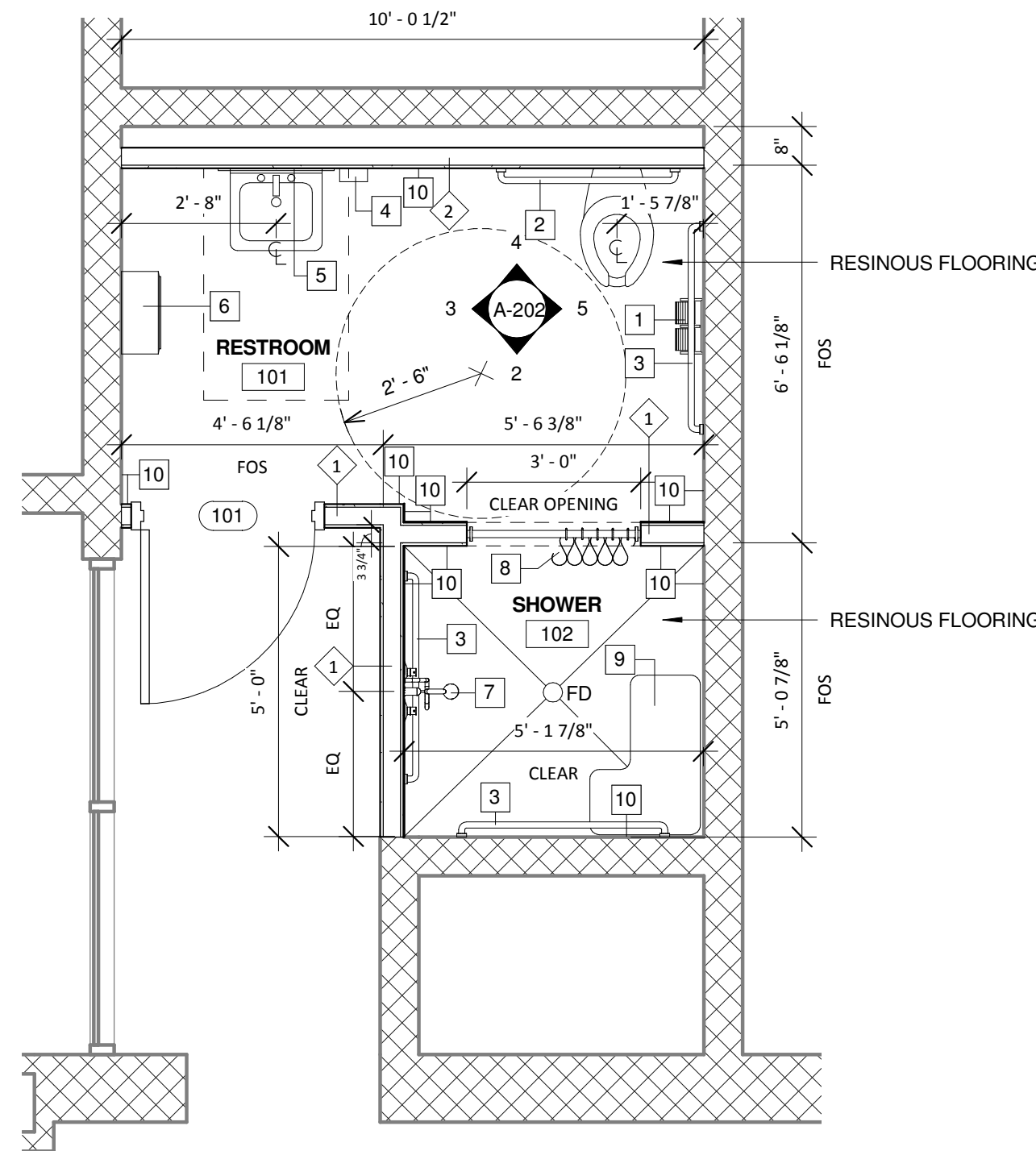


ISSUE	DATE
Issue for Bid	06/13/14

GREGORY H&W POOL REPAIRS

476 Hubbard Dr., Lancaster, SC 29720
GMC # AGRE140014
OSE# H37-9513
Issue for Bid

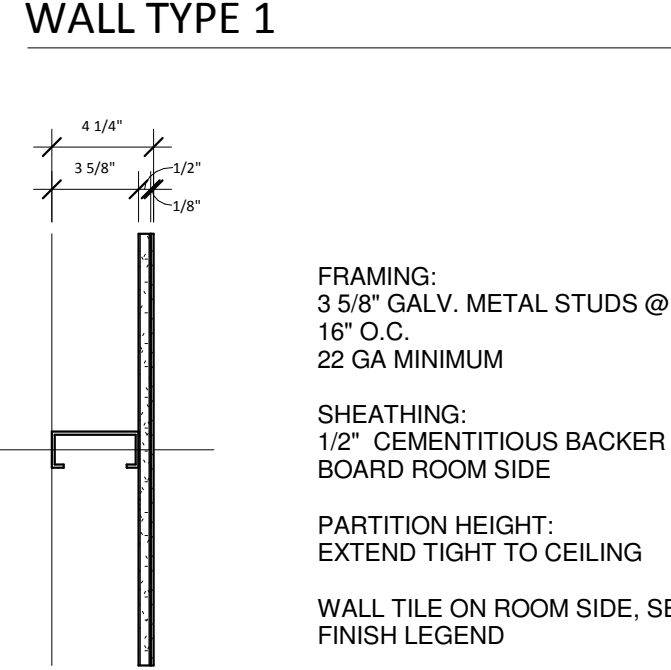
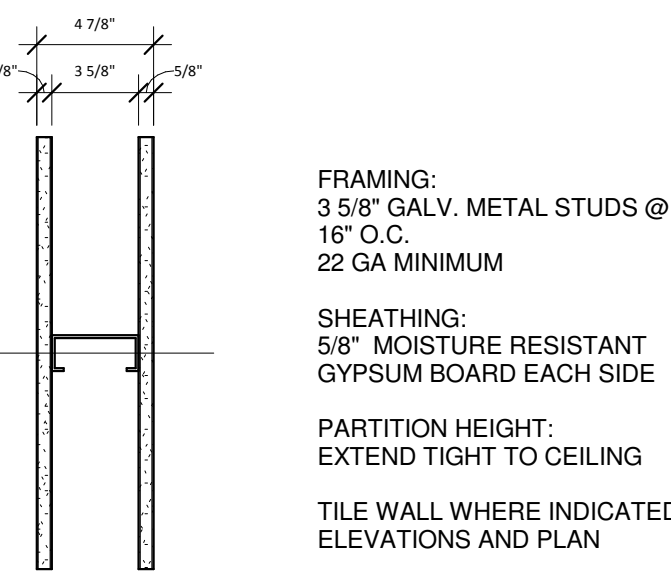
INTERIOR ELEVATIONS



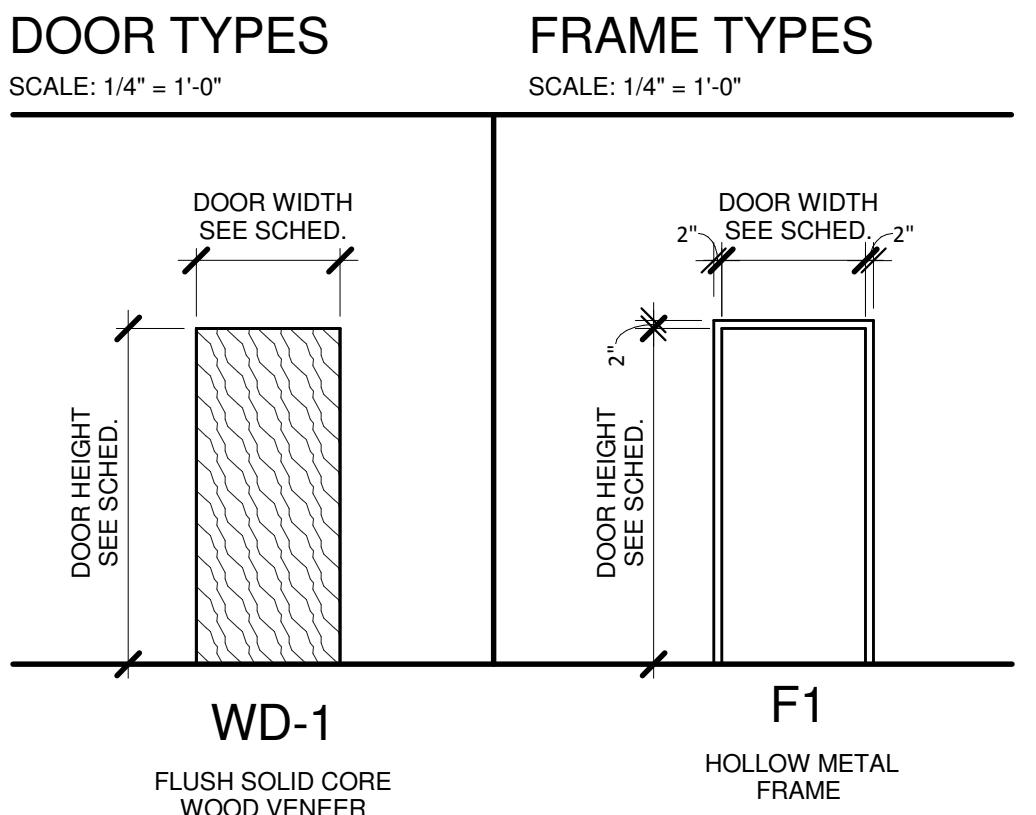
TOILET ACCESSORIES LEGEND

- 1 TOILET PAPER DISPENSER, OFCI
- 2 36" GRAB BAR
- 3 42" GRAB BAR
- 4 SOAP DISPENSER, OFCI
- 5 24" x 36" MIRROR, OFCI
- 6 PAPER TOWEL DISP / TRASH RECEPT, OFCI
- 7 ADA SHOWER HEAD
- 8 SHOWER ROD & 60" CURTAIN, OFCI
- 9 ADA SHOWER SEAT
- 10 TILE WALL, SEE FINISH SCHEDULE

OFCI = OWNER FURNISHED AND CONTRACTOR INSTALLED

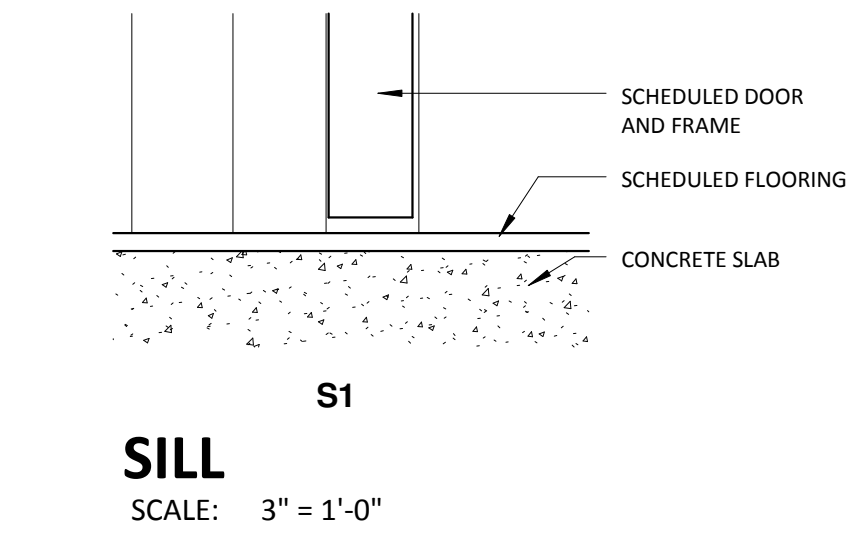
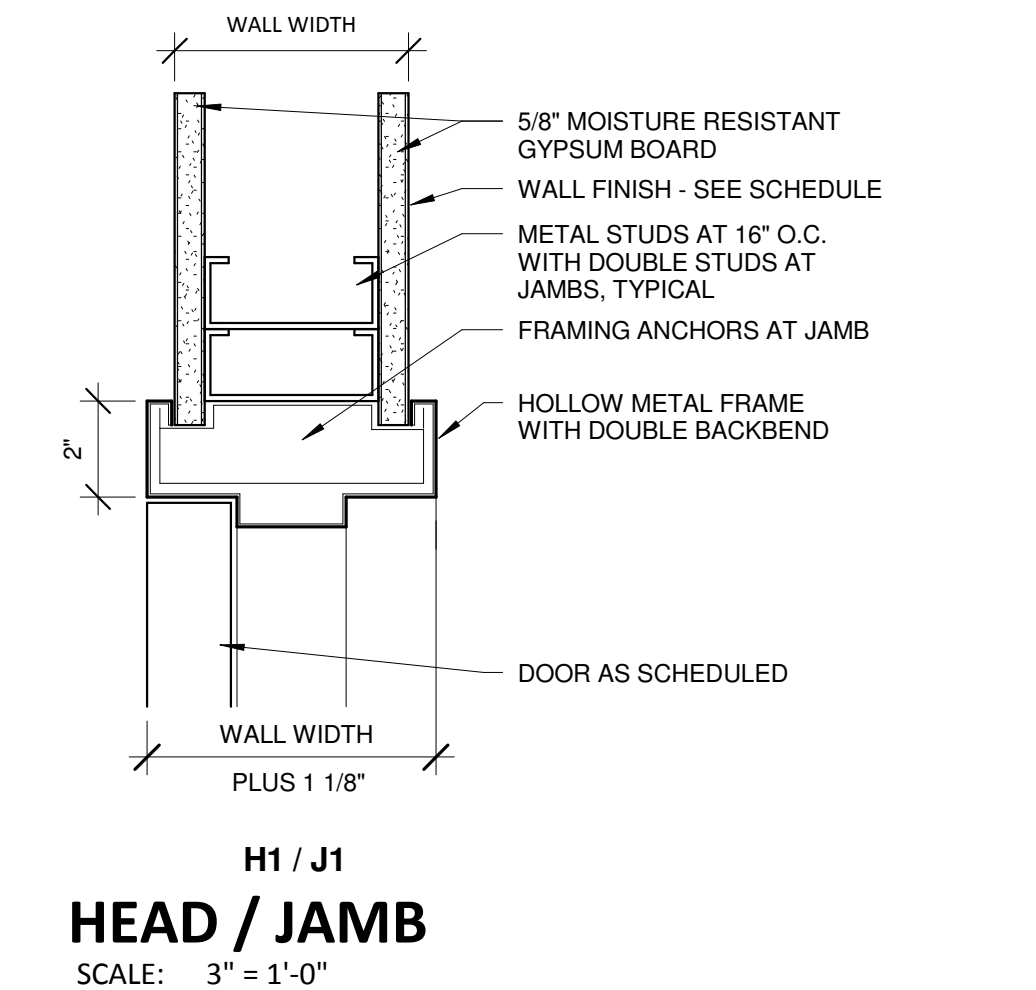


WALL TYPE LEGEND
SCALE: 1 1/2" = 1'-0"



DOOR SCHEDULE

Door Number	Type	Width	Height	Thickness	Material	Finish	Frame Type	Frame Material	Frame Finish	Details - Sheet	A-102 Head	A-102 Jamb	A-102 Sill	Hardware Set	Comments
101	WD-1	3'-0"	7'-0"	0'-1 3/4"	WOOD	STN	F1	HM	PNT		H1	J1	S1		DOOR CLOSER, LOCKSET COMPATIBLE WITH SARGENT LOCKING SYSTEM



ROOM FINISH SCHEDULE

Room Number	Room Name	Floors					Walls			Ceilings	Comments
		Floor Finish	Base Finish	N Wall Finish	E Wall Finish	S Wall Finish	W Wall Finish	CT-1	CT-1	CT-1	
101	RESTROOM	RF	CT-1	CT-1	CT-1	CT-1	CT-1	CT-1	CT-1	EXISTING RE-FINISHED	
102	SHOWER	RF	CT-1	CT-1	CT-1	CT-1	CT-1	CT-1	CT-1	EXISTING RE-FINISHED	
103	EXISTING POOL ROOM	RF	---	PNT-1, PNT-2	PNT-1, PNT-2	PNT-1, PNT-2	PNT-1, PNT-2, PNT-3	N/A	N/A	(1) TOP COAT OF HIGH PERFORMANCE EPOXY	

FINISH LEGEND

FLOOR			WALL		
NUMBER	TYPE	DETAIL DESCRIPTION	NUMBER	TYPE	DETAIL DESCRIPTION
RF	RESINOUS FLOORING	PRODUCT EQUAL TO MANUFACTURER: DURA-FLEX STYLE NAME: HYBRI-FLEX EQ COLOR: FULL RANGE OF Q11 OR Q28 COLORS	PNT-1	PAINT	PRODUCT EQUAL TO MANUFACTURER: SHERWIN WILLIAMS COLOR: SAND BEACH #SW7529 SERIES: B67-200 HIGH PERFORMANCE EPOXY LOCATION: WALL
			PNT-2	PAINT	PRODUCT EQUAL TO MANUFACTURER: SHERWIN WILLIAMS COLOR: ARTISAN TAN #SW7540 SERIES: B67-200 HIGH PERFORMANCE EPOXY LOCATION: WALL
			PNT-3	PAINT	PRODUCT EQUAL TO MANUFACTURER: SHERWIN WILLIAMS COLOR: TBD "LANCASTER BLUE" SERIES: B67-200 HIGH PERFORMANCE EPOXY LOCATION: WALL
CT-1	CERAMIC TILE BASE	PRODUCT EQUAL TO MANUFACTURER: DAL TILE STYLE: GLAZED WALL TILE COLOR: SEMI-GLOSS FULL RANGE SIZE: 4" x 4"	PNT-4	PAINT	PRODUCT EQUAL TO MANUFACTURER: SHERWIN WILLIAMS COLOR: CEILING WHITE #SW7007 SERIES: B67-200 HIGH PERFORMANCE EPOXY LOCATION: CEILING
			CT-1	HARD WALL TILE	PRODUCT EQUAL TO MANUFACTURER: DAL TILE STYLE NAME: GLAZED WALL TILE COLOR: SEMI-GLOSS FULL RANGE SIZE: 4" x 4"

1 ENLARGED NEW RESTROOM & SHOWER
SCALE: 3/8" = 1'-0"

2 INTERIOR ELEVATION
SCALE: 3/8" = 1'-0"

3 INTERIOR ELEVATION
SCALE: 3/8" = 1'-0"

4 INTERIOR ELEVATION
SCALE: 3/8" = 1'-0"

5 INTERIOR ELEVATION
SCALE: 3/8" = 1'-0"

ISSUE DATE

Issue for Bid	Date
06/13/14	

drawn by: JVAS
checked by: MEK

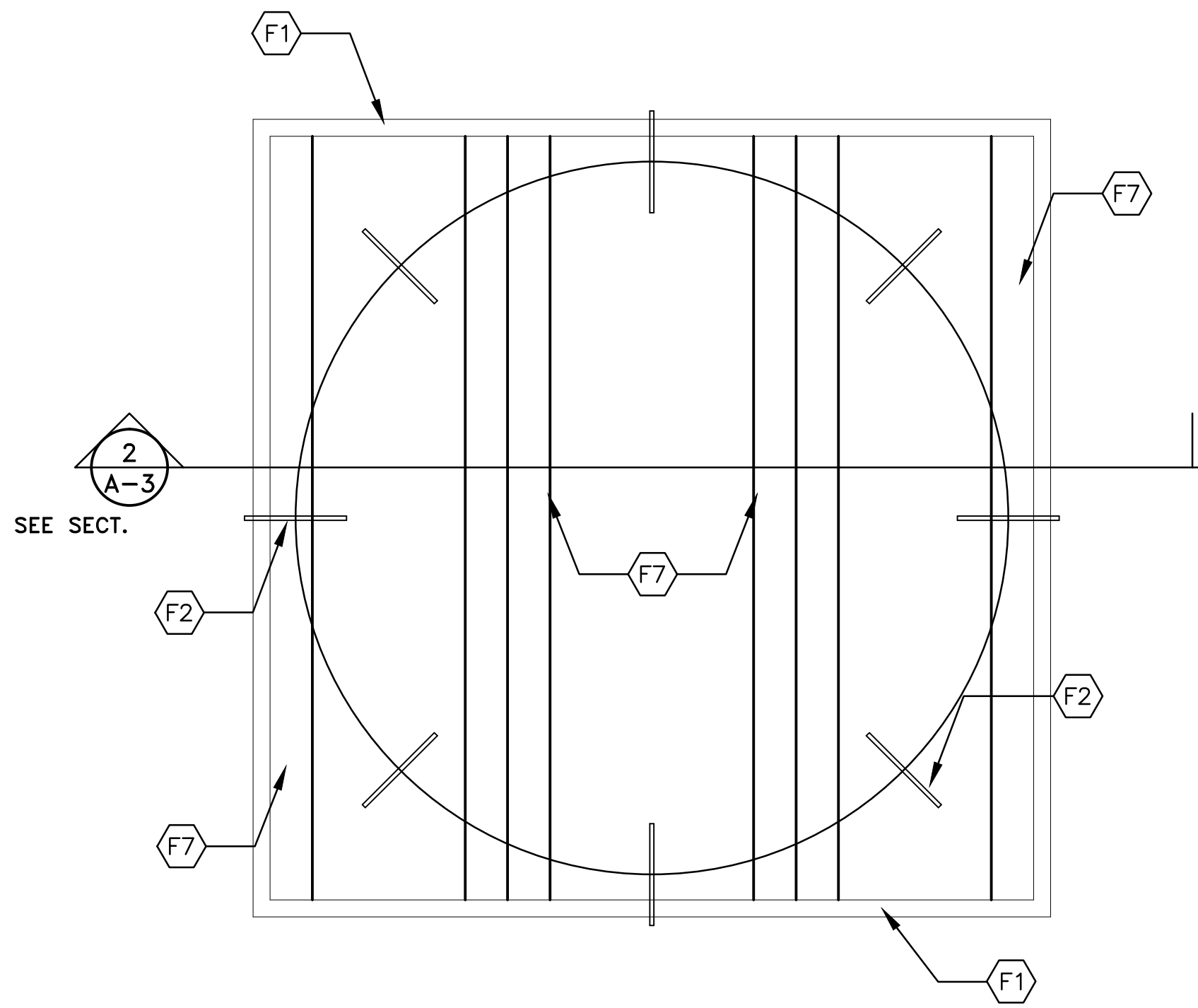
GREGORY H&W POOL REPAIRS
476 Hubbard Dr., Lancaster, SC 29720

GMC # AGRE140014
OSE# H37-9513
Issue for Bid

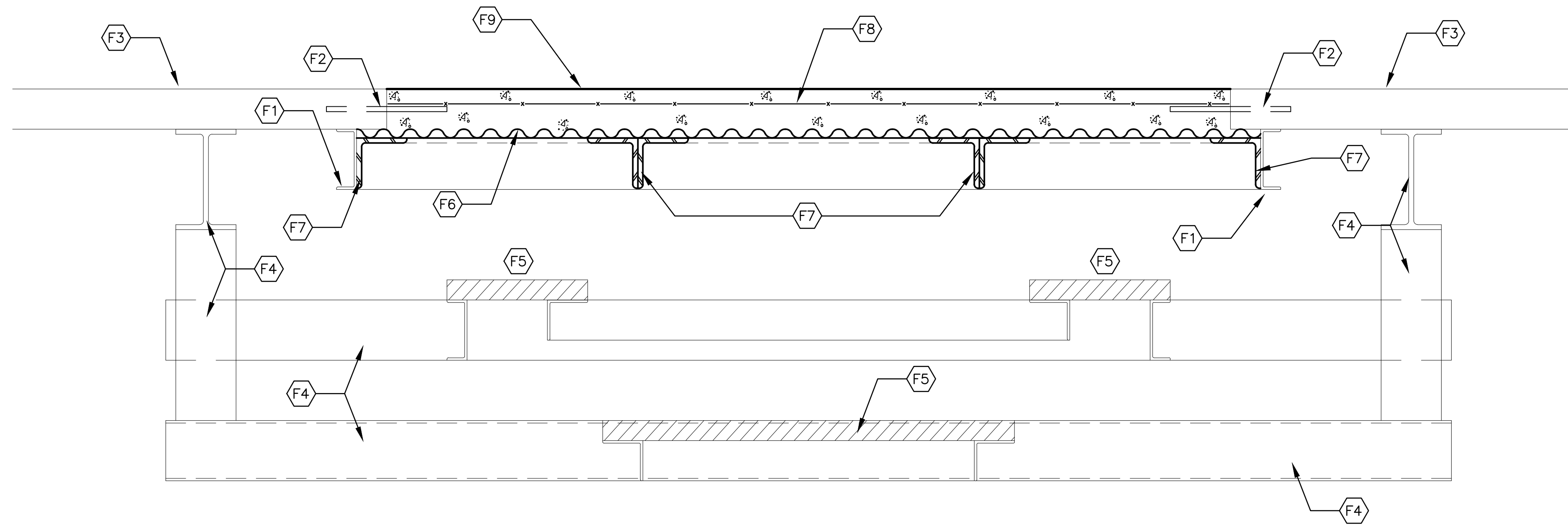
ENLARGED TOILET PLAN, INTERIOR ELEVATIONS AND FINISH SCHEDULE

A-202
sheet of

GOODWYN MILLS CAWOOD
101 East Washington Street, Suite 200 | Greenville, SC 29601
Tel 864.527.0460 | GMCNETWORK.COM



1 STEEL SUPPORT LAYOUT
 SCALE: 3/4" = 1' - 0"



2 NEW CONCRETE FLOORING DETAIL
 SCALE: 1 1/2" = 1' - 0"

NEW CONCRETE FLOORING NOTES:

- F1. EXISTING STEEL CHANNEL TO REMAIN.
- F2. PROVIDE AND INSTALL 3/8" METAL DOWELS 6" INTO EXISTING CONCRETE SLAB AS SHOWN WITH 6" EXPOSED.
- F3. EXISTING CONCRETE SLAB.
- F4. EXISTING STEEL FRAMING TO REMAIN.
- F5. EXISTING THIN CONCRETE SUPPORT SLAB TO REMAIN (SHOWN HATCHED).
- F6. PROVIDE AND INSTALL 2.67" X 7/8" CORRUGATED 18 GAUGE GALVANIZED PANEL, BUT EDGE WITH EXISTING METAL CHANNEL.
- F7. PROVIDE AND INSTALL A STEEL 5" X 5" X 1/2" ANGLE, WELD TO EXISTING CHANNELS AS REQUIRED.
- F8. PROVIDE AND INSTALL 6 X 6 10/10 WELDED WIRE MESH.
- F9. NEW 3500 PSI CONCRETE FLOORING, FINISH SMOOTH SURFACE AND JOINT ALONG CIRCULAR EDGE. PROVIDE A NEW 4" DRAIN WITH COVER, TIE INTO EXISTING DRAIN LINE BENEATH SLAB AS REQUIRED.

CAMPUS PLANNING
 AND CONSTRUCTION
 COLUMBIA, SC 29908

BUILDING:	DRAWING:	DATE:	DRAWN BY:	CHECKED BY:	SEAL:
823	CP00180550	31 JAN 12	CBP		
REV:	DESCRIPTION				

PROJECT TITLE: NEW A.D.A. BATHROOM
 GREGORY HEALTH & WELLNESS CENTER
 University of South Carolina

SHEET:
 A-3
 OF 3
 SHEET IN SET:
 OF

J:\mouse\CBP\concrete\winipoc.dwg, 6/10/2014 9:42:19 AM

PLUMBING SPECIFICATIONS

1.1 SCOPE:

A. Provide all related equipment, labor, materials, excavation and backfill, operations and accessories required for the installation of complete and quietly operating plumbing systems, in accordance with the plans and specifications. This shall include the following:

1. Waste, Drain and Vent Piping
2. Domestic Hot and Cold Water Piping
3. Ball Valves
4. Pipe Hangers and Supports
5. Pipe Insulation
6. Fixtures
7. Floor/Shower Drains and Cleanouts
8. Sterilization of Domestic Water Piping and Certificates
9. Tests
10. Guarantees

1.2 DEMOLITION:

A. Contractor shall provide sawcutting/cutting/core drilling and removal of existing materials as required for the installation of piping as noted on drawings. Patching of finished surfaces shall be by others. Coordinate with General Contractor as necessary.

B. Provide water sample for exist water system prior to start of work. Notify USC if water sample is unacceptable.

1.3 WASTE, DRAIN AND VENT PIPE:

A. Waste, drain and vent piping above slab shall be hubless cast iron pipe with No-Hub couplings.

1. Joints for No-Hub piping shall be medium duty couplings as follows:

Clamp-All Corporation: Clamp-All Hi-Torq 80
Anaheim Foundry: Husky "White" SD-2000
Mission: Heavyweight "Blue"

B. Exist waste line location shown is approximate. Exact location of waste line to be determined in field.

1.4 HOT AND COLD WATER PIPING:

A. Domestic hot and cold water pipe to be hard drawn copper, Type L with soldered wrought copper fittings. Use lead-free hard solder (95-5) for all joints. Use soldering nipples or couplings between screwed and soldered pipe and fittings.

B. Exact locations of water lines to be determined in field.

1.5 DOMESTIC WATER BALL VALVES:

A. Provide ball valves where indicated on drawings. Valves shall be sized according to line sizes indicated.

B. Ball valves shall be Class 125 designed for a minimum of 125 psi steam working pressure. The manufacturer name and

C. Valves to be the product of one of the manufacturers and model numbers shown in the following table:

Ball Valves 2" and smaller (Bronze, Threaded)	Apollo	Hammond	Milwaukee	Nibco
	70-100	8501	BA-100	T-585

1.6 PIPE SUPPORTS:

A. Perforated strap hangers, chain or wire will not be permitted on the job.

B. Support horizontal piping above ground with hangers, threaded rods and turnbuckles as mfd. by Grinnell, PHD Hangers, or approved equal.

C. Support copper pipe with copper or copper plated hangers, spaced not over 6 feet apart for 1/2" pipe and 8 feet apart for larger pipes.

D. All Piping shall be suspended. Do not strap piping to structure.

1.7 INSULATION:

A. All insulation material shall have a fire hazard classification not to exceed flame spread of 25 and smoke developed rating of 50, as listed by Underwriters Laboratories and acceptable under NFPA standards. This applies to the complete system and to the composite insulation with jacket or facings, vapor barrier, joint sealing tapes, mastic and fittings.

B. Domestic hot and cold water piping shall be insulated with 1/2" thick one-piece fiberglass insulation with ASJ embossed vapor barrier laminated jacket.

1. Pipe fittings shall be insulated with same material and thickness as pipe. Install PVC jacket for all pipe insulation fittings. Insulation shall conform to HH-1-558B, Form D, Type III, Class 12; NFPA 90A and MIL-1-223.

1.10 FIXTURES:

A. Provide heavy cast stop valves for all fixtures as follows or equal by EBC or Zurn will be accepted.

Lavatory (3/8"): McGuire H-165-F

1. Stop valves shall be furnished complete with cast brass setscrew escutcheons and chrome plated nipples.

B. Provide 17 ga. polished chrome plated p-traps as follows or equal by EBC or Zurn will be accepted.

Lavs (1-1/4" X 1-1/2"): McGuire 8902-C

1. P-traps shall be furnished complete with cast brass setscrew escutcheons.

C. Fixtures shall be as manufactured by Kohler or equal by American Standard or Crane will be accepted.

D. Toilet seats shall be as manufactured by Bemis or equal by Olsonite or Church will be accepted.

E. Flush valves shall be complete with polished chrome plated cast brass set screw escutcheons as manufactured by Zurn or equal by Sloan Royal will be accepted.

F. Provide Zurn floor mounted chair carrier with lower bracing plate for lavatory.

G. Plumbing fixtures shall be as specified below:

P1H Hdc'd Fir Mtd Water Closet; K-4302 16-1/2" high elongated siphon jet floor mounted water closet, WES-111-YBC-YK, 1.6 gallon flush valve with cast brass set screw escutcheon and solid ring pipe support, Bemis 1655SCT white open front seat, less cover and bolt caps.

P2H Hdc'd Wall Hung Lavatory; K-2849-W, 20" x 18" wall hung enameled cast iron lavatory with wall lock-down lugs at rear of fixture, 4" centers, Chicago 802-CP-VPC mixing faucet with 317 wrist blade handles and vandal proofing, McGuire 155A grid strainer. Mount 33" above finished floor to rim of fixture. Provide insulation kit for p-trap and each supply valve where indicated and as detailed on drawings.

P3H Hdc'd Shower Fitting; Symmons 1-100-FS-X-VP-B30 Safetymix pressure balance shower fitting with metal handle, integral stops, 4-151A deluxe shower head with anchor plate, levered diverter, hand spray unit with quick disconnect, chrome plated cast brass set-screw escutcheon, in-line vacuum breaker, chrome plated bar and vandal resistant features.

1.11 FLOOR/SHOWER DRAINS AND CLEANOUTS:

A. Provide deep seal p-traps for floor drains. Provide brass cleanout plugs for all cleanouts. Floor drains and cleanouts shall be as manufactured by J.R. Smith or equal by Josam, Zurn or Wade will be accepted.

FD 2005-8A-NB-V cast iron body with 8" diameter nickle bronze strainer, 3" outlet. Provide Proset trap-guard trap primer alternative and locate below strainer. Install drain flush with finished floor surface.

SD 2005-5A-NB cast iron body with 5" diameter nickle bronze strainer, 3" outlet. Install drain flush with finished floor surface.

CO Z-1440-BP.

1.13 STERILIZATION OF HOT AND COLD WATER SYSTEMS:

A. Sterilize with a solution containing not less than (50) parts per million of available chlorine. Use sodium hypochlorite solution conforming to Federal Specifications OB-441-A, Grade D. Solution to remain in system for (24) ours, opening and closing all valves several times. After sterilization, flush with clean water until chlorine is not greater than 0.2 parts per million.

B. Have samples collected from throughout the systems on (2) consecutive days tested by an approved independent testing lab and deliver certificates of approval to County Sanitarian and Owner. All laboratory fees shall be included in the plumbing contract. Contractor shall be responsible for preventing use of water from systems for human consumption until tested and approved. Should any of the tests prove unfavorable, the entire disinfection and sampling process shall be repeated.

C. After the (24) hour retention period of the disinfection solution, the treated water should contain no less than 25 mg/l chlorine throughout the length of pipe.

D. Certificates indicating negative results of bacteriological test shall be procured prior to building acceptance.

1.14 TESTS:

A. Pressure and leak test all water piping at minimum 150 PSI for 4 hours and in accordance with local requirements.

B. Test entire waste and venting pipe systems by plugging all necessary openings and filling systems with minimum 10'-0" water column, or to the top of the highest vent stack.

1.15 GUARANTEE:

A. Contractor shall guarantee all equipment, piping and any other materials specified under this Division of the contract for a period of one (1) year from the date of project acceptance unless otherwise indicated. Upon failure of any part(s) of the system during the guarantee period, the affected part(s) shall be repaired or replaced promptly by and at the expense of the Contractor.

B. If any component fails during the regular one year period, then the replacement part(s) shall be given an additional one (1) year guarantee from the time of replacement. This shall continue until the items have given one (1) year satisfactory service.

SYMBOL	DESCRIPTION	CW	HW	WASTE	VENT	MOUNTING HEIGHT
FIH	HDC'D FLR MTD WATER CLOSET (A)	1"	---	3"	2"	16-1/2"
F2H	HDC'D WALL HUNG LAVATORY	1/2"	1/2"	2"	1-1/2"	33"
F3H	HDC'D SHOWER FITTING	1/2"	1/2"	3"SD	---	(B)

FIXTURE KEY:

- (A) SHIM WATER CLOSET TO MAINTAIN LEVEL INSTALLATION.
- (B) MOUNT FIXED SHOWER HEAD 18" AFF.

PLUMBING NOTES

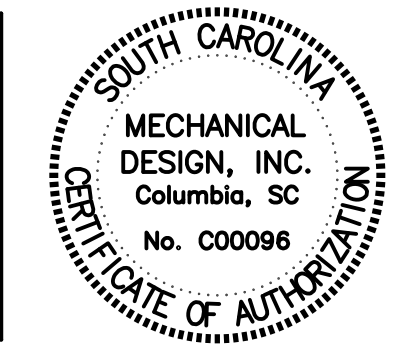
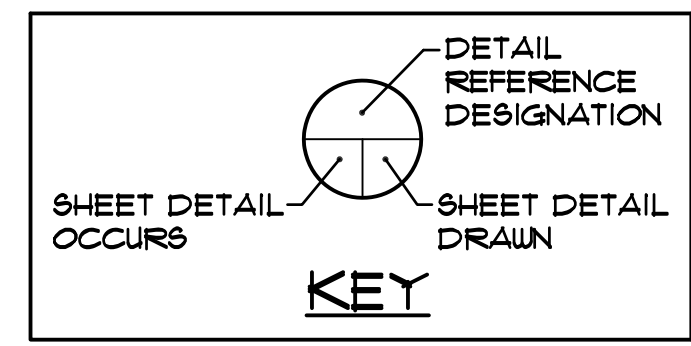
1. DO NOT SCALE DRAWINGS. ROUGH FROM EXIST CONDITIONS AND FIXTURE MANUFACTURER'S DRAWINGS.
2. COORDINATE PLUMBING SYSTEMS WITH ALL TRADES TO AVOID INTERFERENCE AND CONFLICTS PRIOR TO INSTALLATION OF PIPING, FIXTURES, AND EQUIPMENT.
3. ALL WORK AND MATERIALS SHALL BE IN ACCORDANCE WITH THE (IBC) BUILDING AND (IPC) PLUMBING CODES, 2006 EDITIONS OF THE (ICC) INTERNATIONAL CODE COUNCIL AND ALL LOCAL CODES AND ORDINANCES.
4. WHENEVER THE WORD "PROVIDE" IS USED, IT SHALL MEAN FURNISH AND INSTALL COMPLETE AND READY FOR USE.
5. UNLESS OTHERWISE SHOWN OR NOTED, ALL PIPING SHALL BE RUN CONCEALED IN WALLS, CHASES AND/OR ABOVE CEILING.
6. COORDINATE FLOOR SLOPE WITH ARCHITECTURAL DRAWINGS AS REQUIRED.
7. LOCATE BALL VALVES OVERHEAD IN BASEMENT TO PERMIT EASY ACCESS. (SEE NOTE-2)
8. COLLECT ALL VENTS ABOVE CEILING APPROX WHERE SHOWN.
9. PROVIDE DEEP SEAL P-TRAP FOR FLOOR DRAIN TO PREVENT LOSS OF TRAP SEAL IN ACCORDANCE WITH 2006 (IPC) PLUMBING CODE 1002.4. PROVIDE PROSET TRAP GUARD TRAP PRIMER ALTERNATIVE AND INSTALL BELOW STRAINER.

SYMBOL	DESCRIPTION
— — — — —	SANITARY WASTE PIPING
- - - - -	SANITARY VENT PIPING
— — — — —	COLD WATER PIPING
— — — — —	HOT WATER PIPING
---x---x---x---	EXIST PIPING TO BE REMOVED
⊕	BALL VALVE
CO	CLEANOUT
⊙ SD	3" SHOWER DRAIN
⊙ FD	3" FLOOR DRAIN - TOILET
⊕	CONNECT TO EXISTING
⊕	POINT OF DEMOLITION
(A)(B)	SHOCK ARRESTOR AND SIZE DESIGNATION
CW, HW	COLD WATER, HOT WATER
VTR	VENT THROUGH ROOF
AFF	ABOVE FINISHED FLOOR

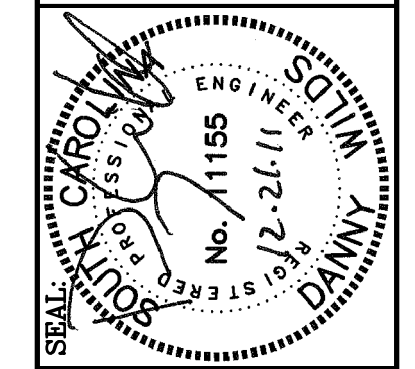
TYPICAL PLUMBING DEMOLITION NOTES

- D1. LOCATIONS OF EXIST UTILITIES AND PIPING ARE BASED ON DRAWINGS FURNISHED BY THE UNIVERSITY AND SEALED BY WILLIAM B. LELAND DATED OCTOBER 22, 1979.
- D2. CONTRACTOR SHALL FIELD COORDINATE AND VERIFY EXIST CONDITIONS PRIOR TO START OF DEMOLITION WORK. NOTIFY ENGINEER IMMEDIATELY IF QUESTIONS OR CONFLICTS ARE DISCOVERED AT START OF PROJECT.
- D3. PROVIDE SAWCUTTING, CUTTING, CORE DRILLING AND REMOVAL OF EXIST FLOOR SLABS AND/OR EXIST WALLS AS REQUIRED FOR THE INSTALLATION OF PLUMBING SYSTEMS. PATCHING OF EXIST FINISHES SHALL BE BY THE GENERAL CONTRACTOR.
- D4. REMOVE EXIST WHIRLPOOL AND ALL ASSOCIATED WATER, WASTE AND VENT PIPING COMPLETE.
- D5. REMOVE EXIST 2" VENT PIPING TO POINT BELOW SLAB.
- D6. FIELD VERIFY EXACT LOCATION FOR CHASE AT WATER CLOSET WITH EXIST STEEL BELOW SLAB TO PREVENT CONFLICTS.

END OF SPECIFICATIONS



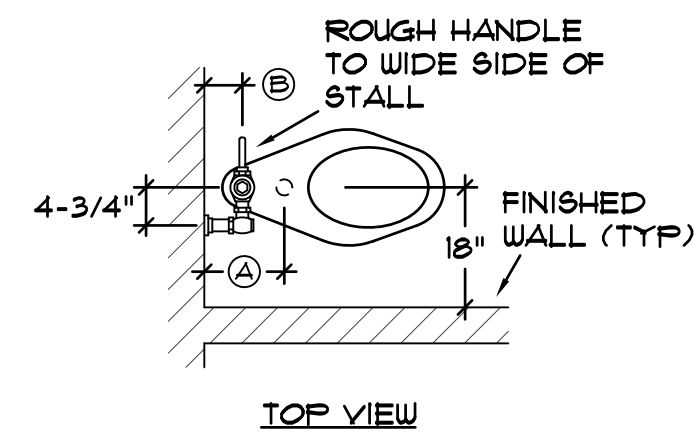
MECHANICAL DESIGN INC.
4403 Broad River Road
Columbia, S.C. 29210
(803) 731-9834
(803) 731-9837 FAX
CONTACT: M. HENDRIX
DATE: 12/21/11 COMM. NO. 112949



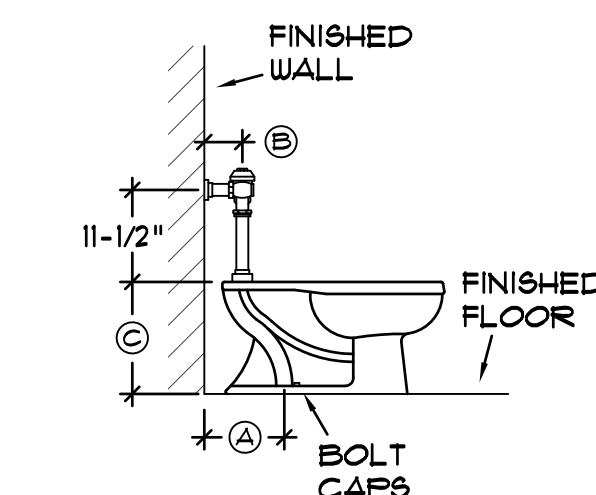
CHECKED BY:	DATE:	DATE:	DATE:	DATE:
MCH	21 DEC 11	TOILET P1	TOILET P1	TOILET P1
BY	DESCRIPTION	DESCRIPTION	DESCRIPTION	DESCRIPTION
BY	DATE	DATE	DATE	DATE
BY	DATE	DATE	DATE	DATE

PROJECT TITLE: GREGORY CENTER TOILET RENOVATION
USC LANCASTER

UNIVERSITY of South Carolina



TOP VIEW



SIDE VIEW

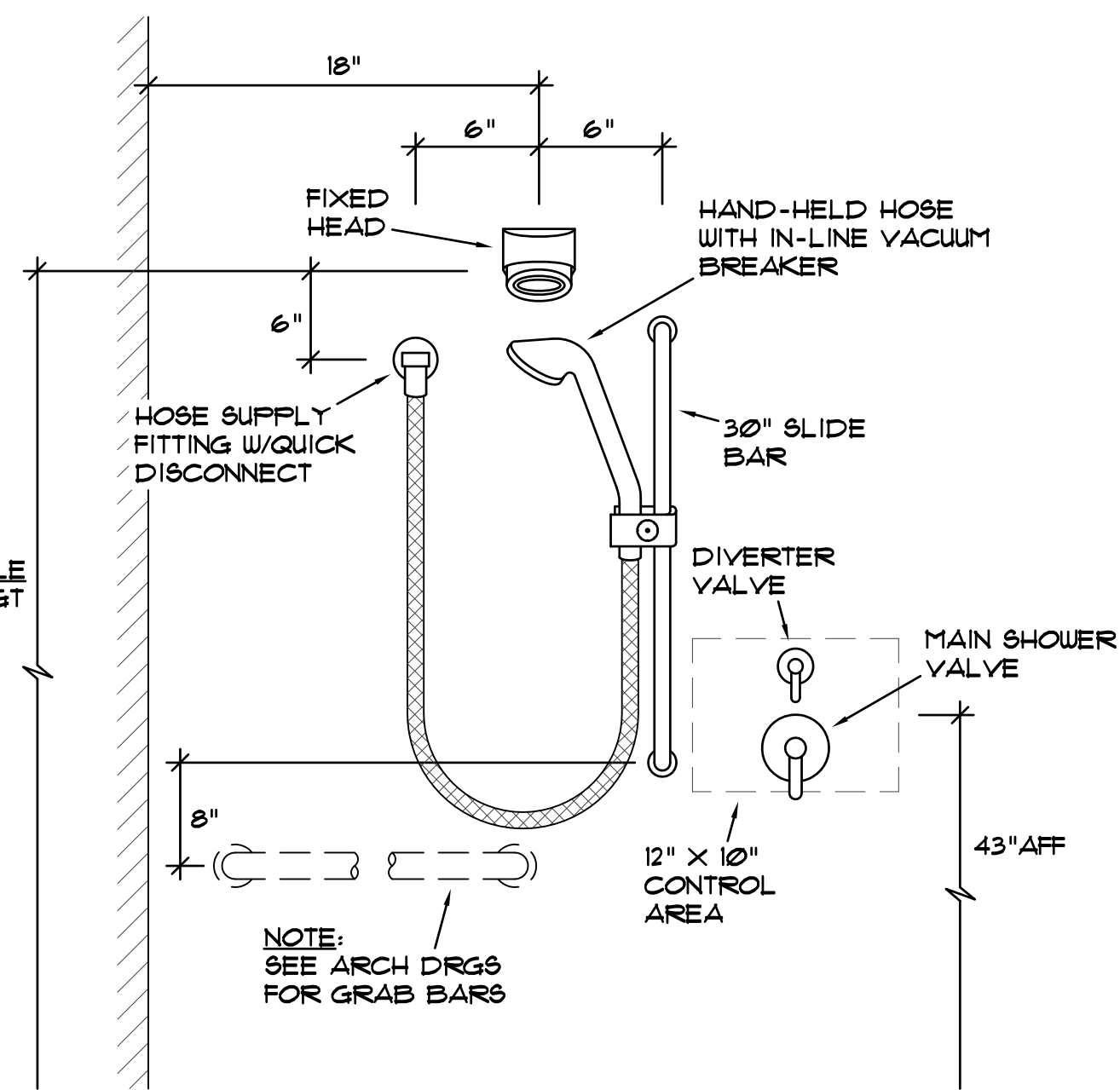
HANDICAPPED

TYPICAL FLOOR MOUNTED WATER CLOSET INSTALLATION

NO SCALE

KEY:

- Ⓐ 10" OR 12", ROUGH AS APPLICABLE.
- Ⓑ COORDINATE WITH FIXTURE MANUFACTURER.
- Ⓒ VERIFY WITH MANUFACTURER PROVIDED.
- Ⓓ REFERENCE ICC/ANSI A117.1-2003 FOR MINIMUM CLEARANCE REQUIREMENTS FOR INSTALLATION OF HDC'D WATER CLOSETS.

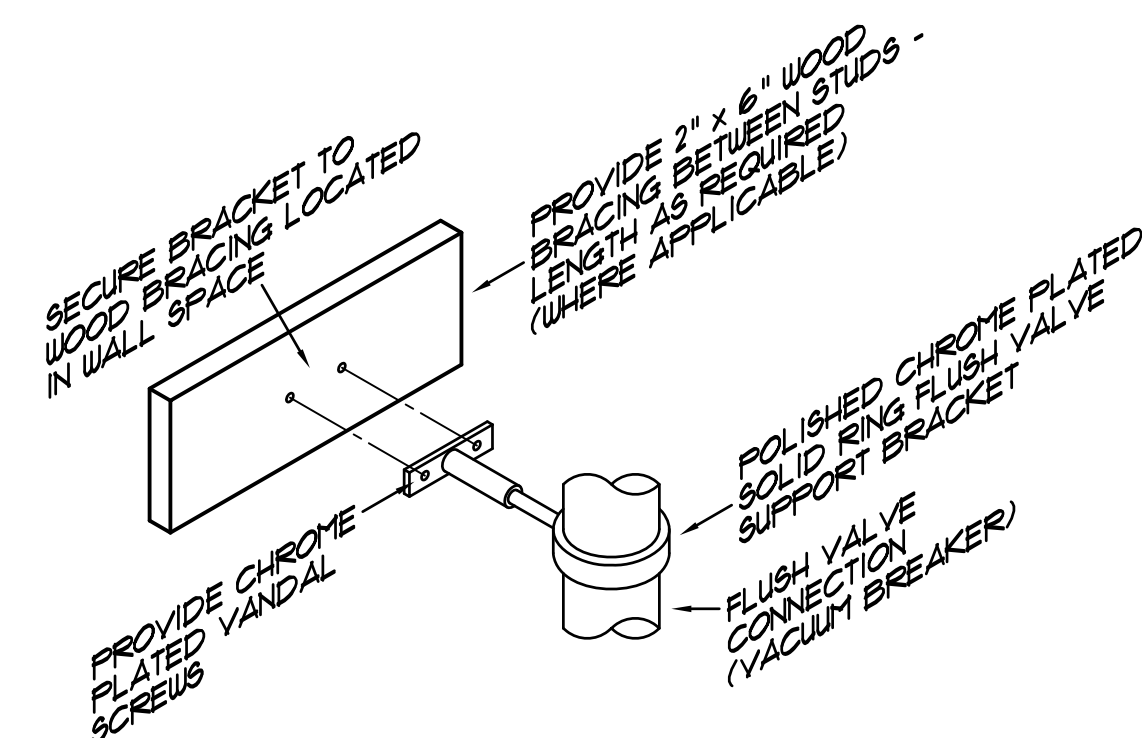


60" X 36"

AS ADA SHOWER ROUGH-IN DETAIL

NO SCALE

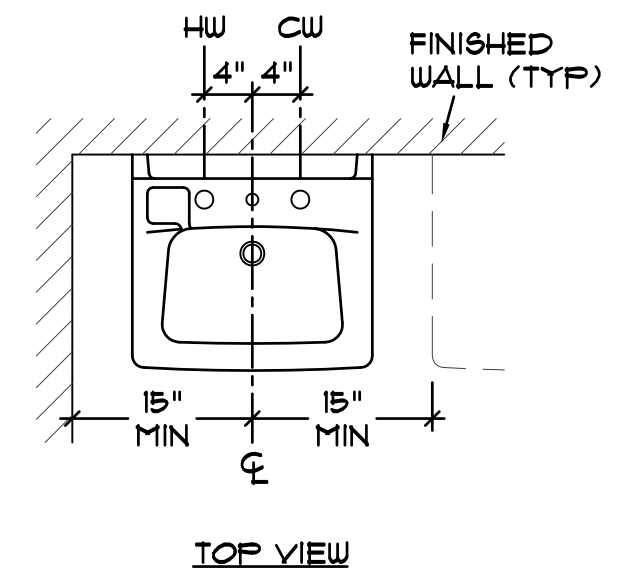
NOTE: INSTALLATION OF ALL SHOWER COMPONENTS ARE BASED ON MINIMUM ADA GUIDELINES FOR HDC'D SHOWER. (ANSI A117.1-03)



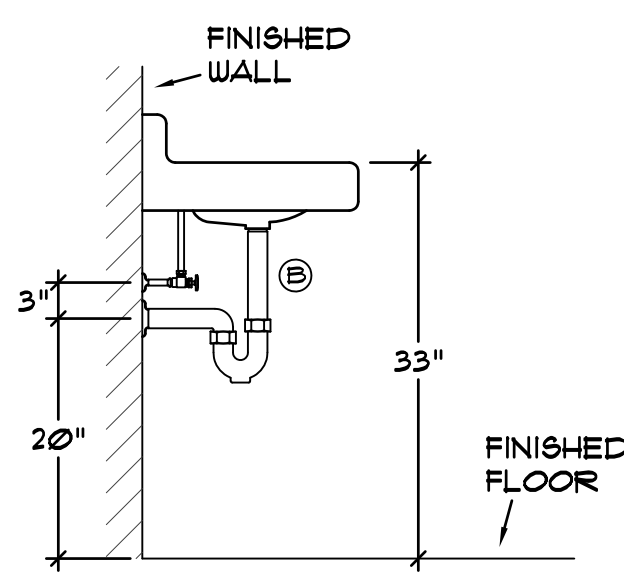
FV FLUSH VALVE SUPPORT DETAIL

SCHEMATIC

NOTE: PROVIDE FLUSH VALVE SUPPORT BRACKETS ON ALL FIXTURE FLUSH VALVES.



TOP VIEW



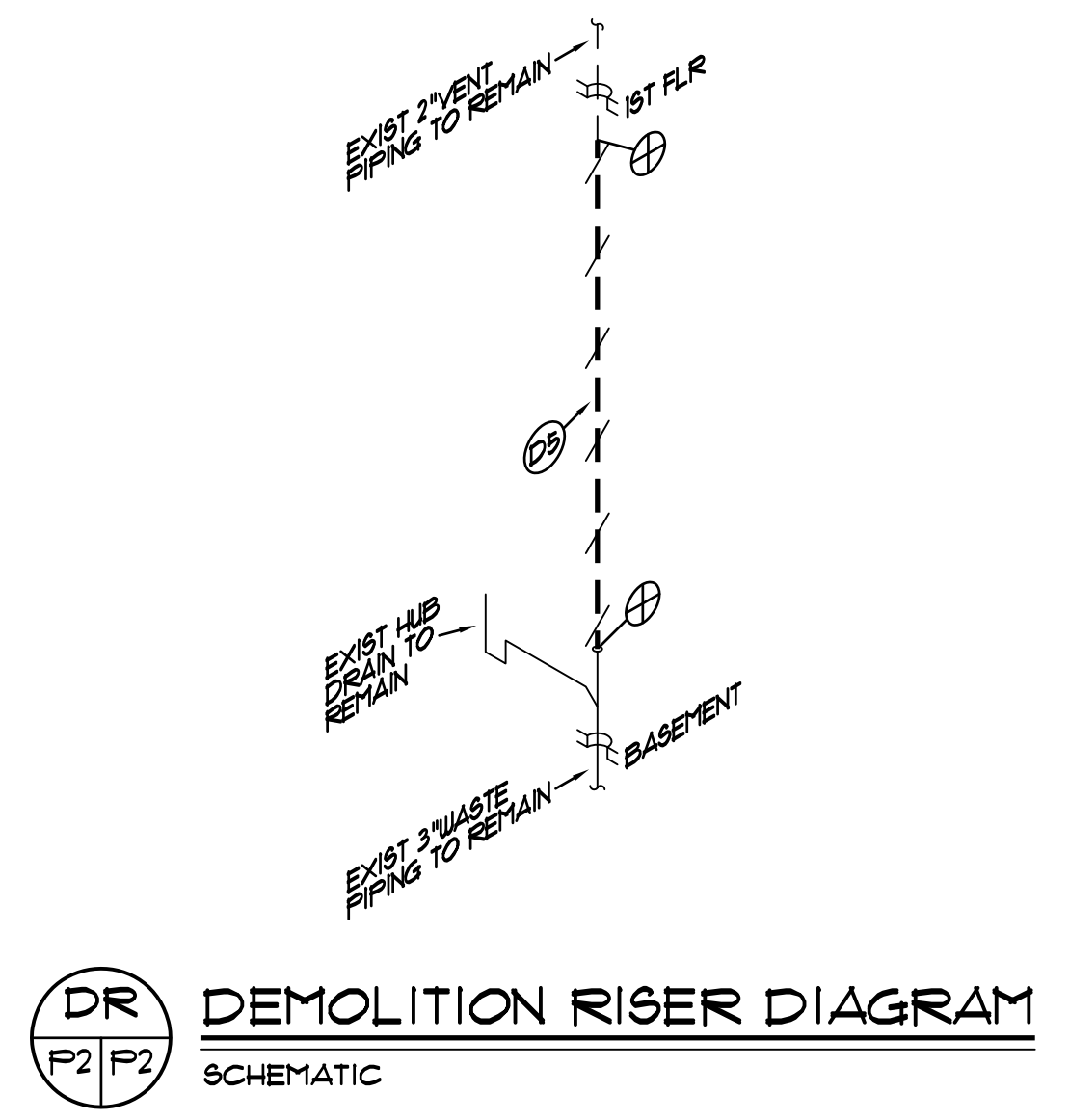
SIDE VIEW

HANDICAPPED

TYPICAL LAVATORY INSTALLATION

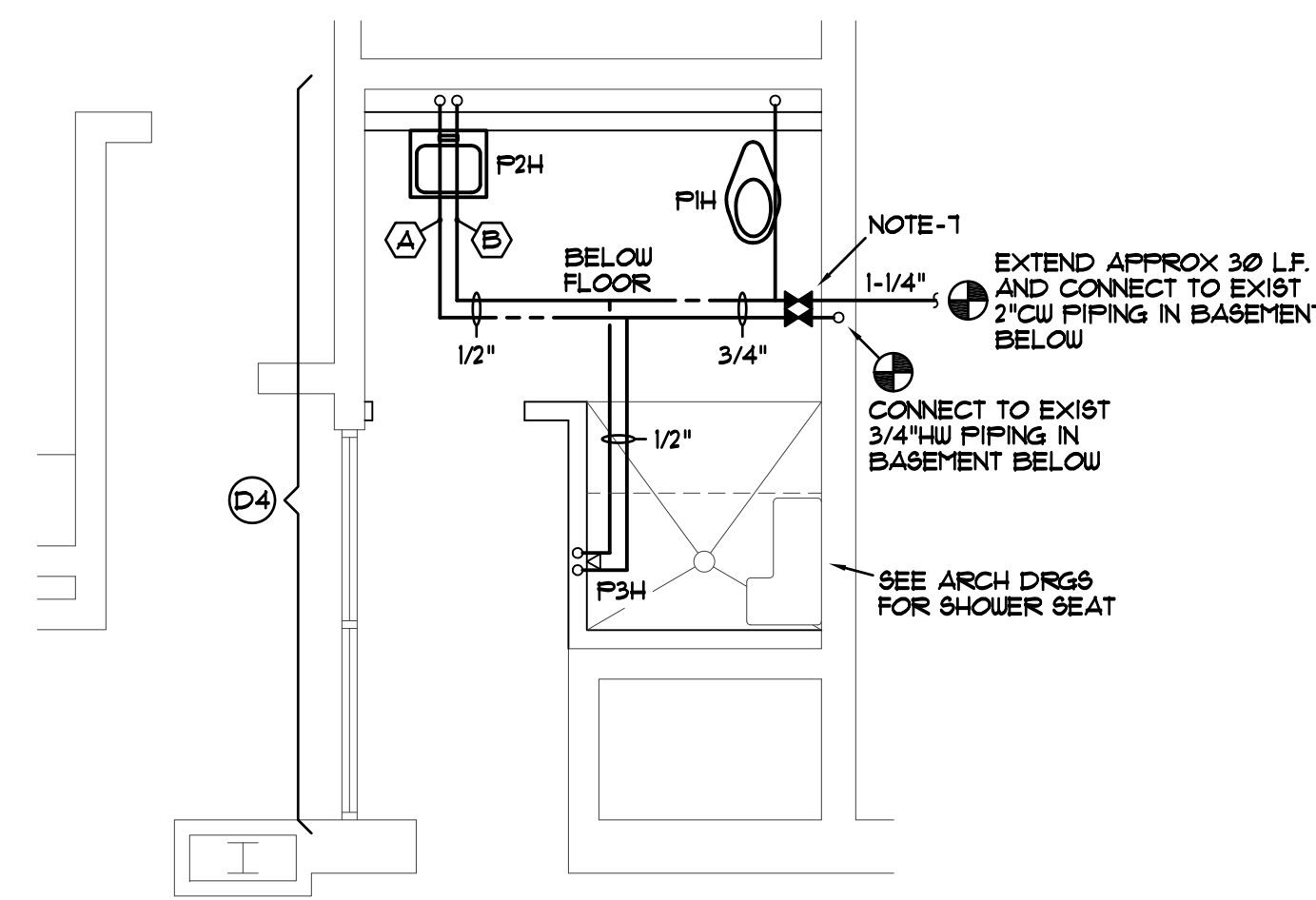
NO SCALE

KEY:
 Ⓐ COORDINATE AND MAINTAIN ROUGH-IN DIMENSIONS FOR SUPPLIES AND WASTE OUTLET AS INDICATED. (SEE SPECIFICATIONS)
 Ⓑ CONTRACTOR SHALL ORDER TAILPIECE LENGTH FOR FIXTURE AS REQUIRED.

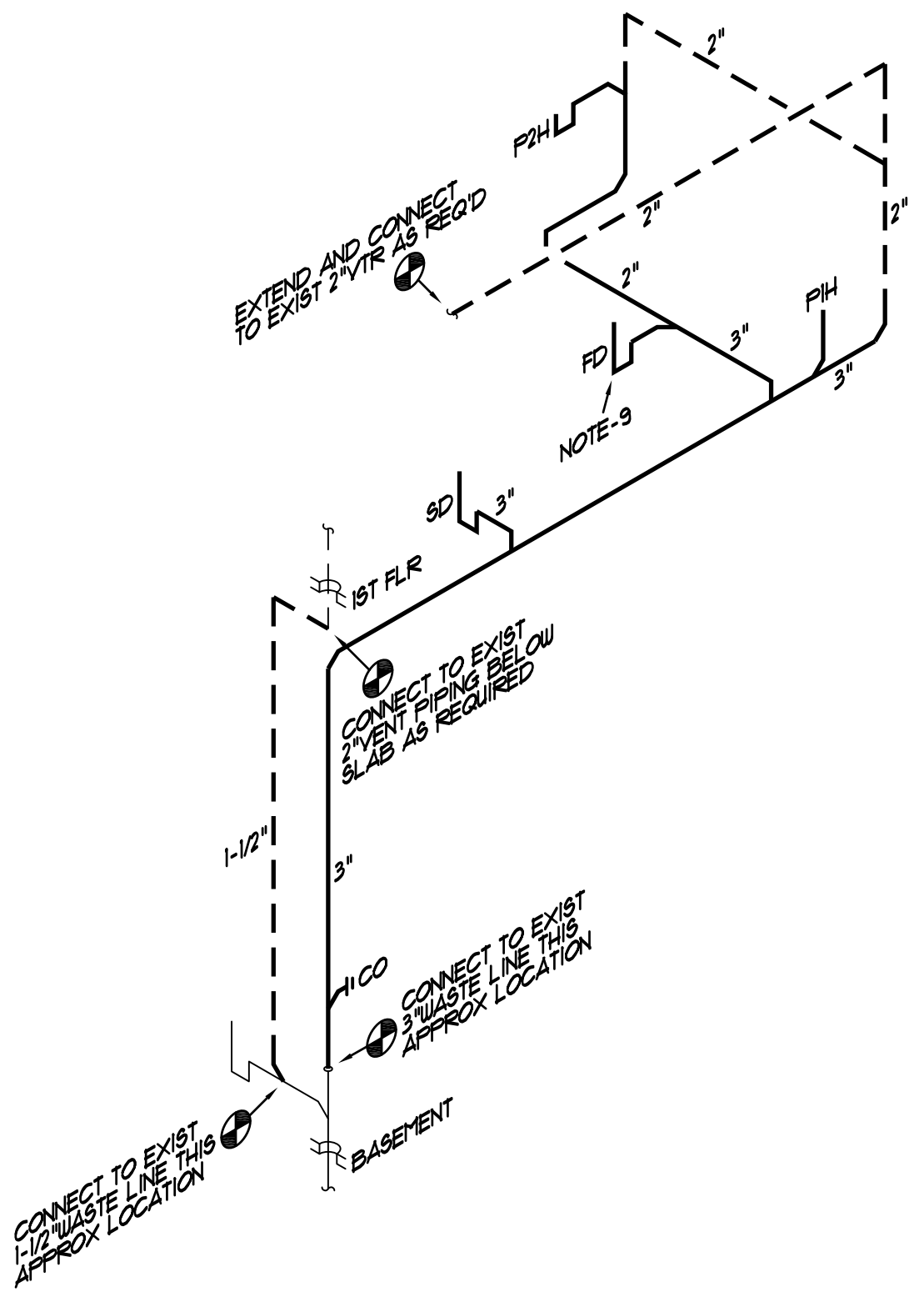


DR DEMOLITION RISER DIAGRAM

SCHEMATIC

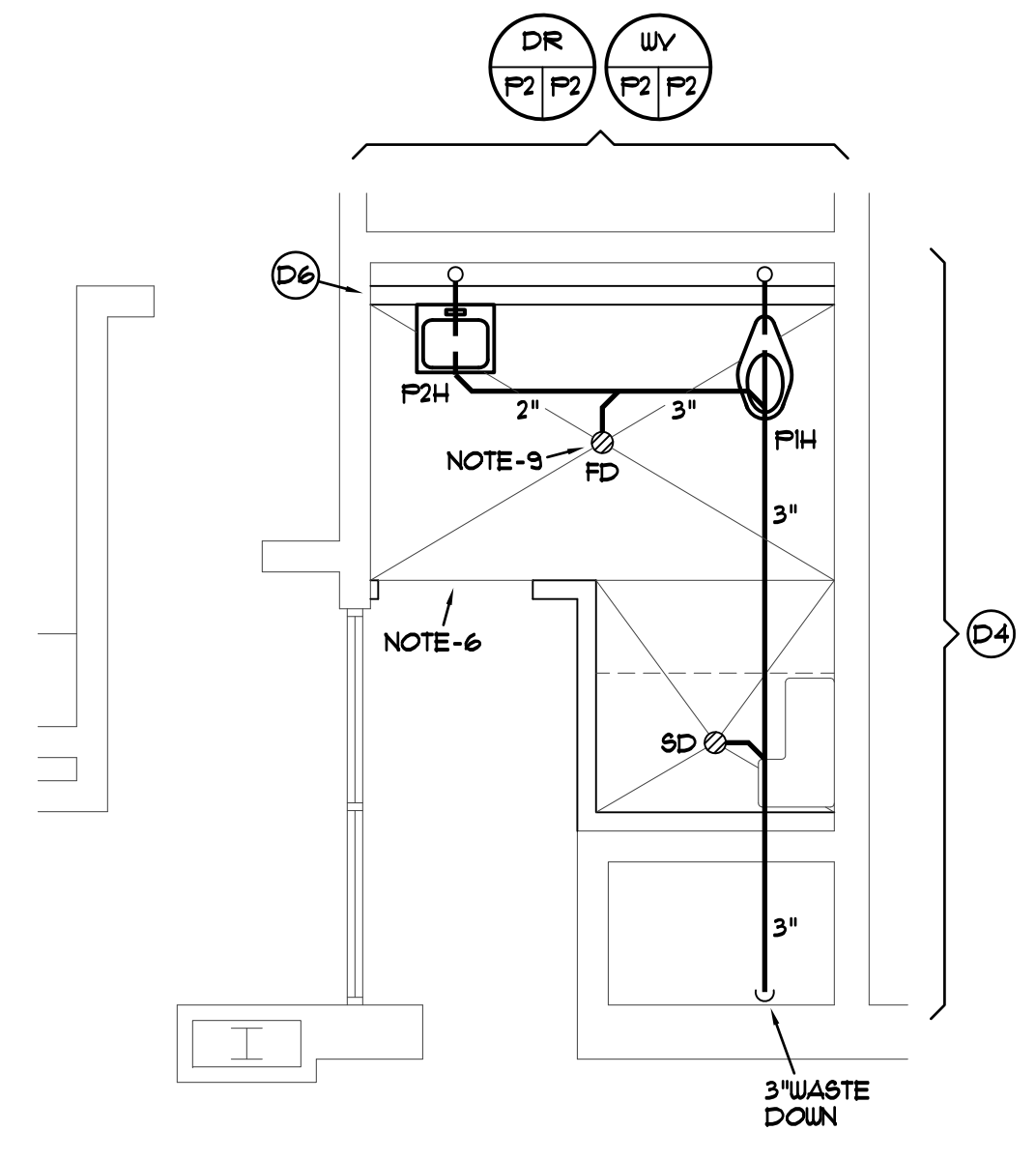


WATER PIPING



WV WASTE AND VENT RISER DIAGRAM

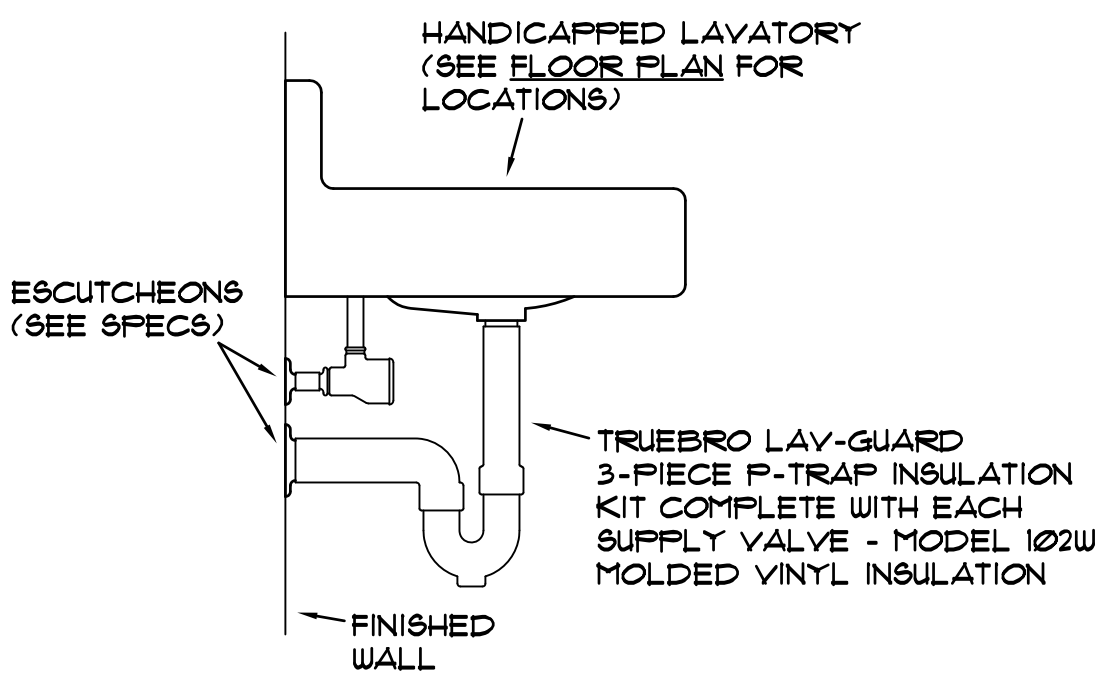
SCHEMATIC



WASTE AND VENT PIPING

PARTIAL PLUMBING PLANS

SCALE: 1/4" = 1'-0"



HL P-TRAP INSULATION DETAIL

NO SCALE

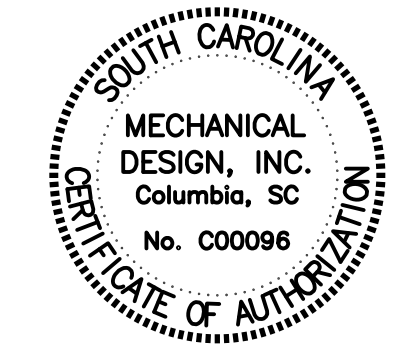
CAMPUS PLANNING AND CONSTRUCTION
COLUMBIA, SC 29208

CHECKED BY:	MCH	DATE:	DEC 11	DRAWN BY:	WBE
ORIG. BY:	DR	DATE:	DEC 11	DATE:	DEC 11
REV.		DESCRIPTION			

PROJECT TITLE: GREGORY CENTER TOILET RENOVATION
USC LANCASTER

University of South Carolina

SHEET: P2
OF 2
SHEET IN SET:
2 OF 2



MECHANICAL DESIGN, INC.

4403 Broad River Road
Columbia, S.C. 29210
(803) 731-9834
(803) 731-9837 FAX

CONTACT: M. HENDRIX

DATE: 12/21/11 COMM. NO. 112949